

Welcome to our first 2008 newsletter, friends!

Message from the Chair

Almost the middle of 2008 and our first newsletter appears. Here at Border Trust we have been busy since February consolidating on the successes of 2007. Several of these are highlighted in our 'new look' newsletter. I am particularly pleased for the students, staff and supporters of Highwater Theatre – one of our 'Back to Reality' fundees – in having their hard work and achievements recognized with a very substantial 3-year grant of \$480,000 from the Federal Government. Well done!

We have a strong sense of our own achievements on both the fundraising and business fronts, with increases in corporate support allowing us to employ our Administrator - welcome, Julie – on a more stable basis, and to invest in an expanded marketing and promotions approach, with help from Alana Nesire and Robyne Young.

And a steady increase in personal and business donations to our public fund will allow us to provide two rounds of Community Grants, one currently open (May-June) and one in November. We are seeing the benefits of a steady growth in profile and public response, with the benefits flowing to community groups and activities – the whole point of a community foundation.

Getting to this stage, and building from it, entails good planning, and adjusting to the changing scope and nature of the communities we serve. With the strength of our current Board and the assistance of the many community voices and expertise in our Community Leaders Network, we look forward to a productive planning workshop on 25 June, to be held in the Studio at Hothouse Theatre on the Lincoln Causeway.

Flowing from the National Forum for Community Foundations, which we hosted in Albury Wodonga last August, a national body has been established to bring together, identify and represent the interests of all the Community Foundations in Australia – now numbering over 30. This peak body, known as Australian Community Philanthropy Ltd, commenced operation earlier this year. With directors from three states (members may be either individuals or community foundations), the company Secretary is Catherine Brown, and I have the honour and pleasure to be its first Chair.

So, we are very active, and appreciative of your interest and support. I look forward to seeing you at the Planning Workshop, if you can make it, or at any time you are able to drop by at our offices, just off Dean St down the laneway next to Canteen Cuisine.

Best wishes

Chris Horton

Community Leaders Network News

Border Trust 2007 Christmas Party an unmitigated success!

The Mitta Mitta Canoe Club and the beauty of Murray River vistas at Norieul Park provided the perfect backdrop to a most enjoyable and relaxed gathering, the culmination to a great year for Border Trust. A casual barbecue cooked by our talented Board members and an array of delectable salads and local wines were enjoyed by all. Thanks to your support and the kind donations of our valued sponsors, several thousand dollars were raised to launch the first Small Grants Round for 2008.

Congratulations to the Christmas Raffle Winners!

1st Prize: Sue Reilly
2nd Prize: Chris Cain
3rd Prize: Ruth Tilley
4th Prize: Dougald Frederick
5th Prize: Campion Decent

New Administrator appointed

Julie Perkins commenced with Border Trust on 3rd March. She has a sound knowledge of the region as a result of 10 years experience in the local recruitment industry. A volunteer for Red Cross on a regular basis, Julie also runs a successful home based business. She is employed on a part time basis.



Julie is delighted to be working with Border Trust. "I consider it a privilege to be given this opportunity to work with such a dedicated and visionary organization. The whole concept of 'giving where you live' and promoting community philanthropy reflects my philosophies. I look forward to establishing ties with all of the friends of Border Trust."

Photo courtesy of Border Mail

Stay tuned for further developments!

Border Trust is working closely with Hume Building Society on the development of a new type of fund. Whilst still in the planning stage, we hope to bring you more news in the near future of this exciting new development, which will be in the form of a co-investment arrangement. When finalized, there is enormous potential to really make a difference to the level of grant funding across the region. Border Trust has been working closely with two locally based benefactors and hopes to be able to bring you more detail when we next go to print.

The Ultimate Good News Story



Highwater Theatre, a Back to Reality Grant recipient in 2007, has utilized their grant to the greatest long term benefit of the theatre. A submission to the National Community Crime Prevention Program has been approved and a recurring grant of \$160,000 per year for the next three years is the result.

Highwater Theatre's initiative in promoting a creative and nurturing environment for underprivileged and disenfranchised youth speaks for itself. No doubt this funding allocation will greatly enhance the magnitude of the good they can achieve across the region.

In a letter of thanks to Border Trust recently, the Highwater Theatre Company have kindly offered to perform for us at our upcoming Planning Workshop. *Don't miss this fabulous opportunity to celebrate their achievements!*



'Back to Reality' Grant Round Opening Soon

Border Trust is pleased to announce that a further grant round funded by the Back to Reality Foundation will be launched in the coming weeks. Projects which benefit youth in the region will be considered. A total of \$20,000 in funding is available for projects which improve the life of young people in our region. Further details are available from the Border Trust website

'Walk the Walk' Funds Continue to Make a Difference

One year down the track, its great to acknowledge that funds raised at the opening of the Hume Freeway bypass are still making a difference.

One of the successful recipients of the Trust's 2007 Community Grants, funded from 'Walk the Walk' was the Albury Toy Library. Its project 'Infants and Parents at Play' has culminated in the recent launch and distribution of 23 'Baby Bundles'. Each bundle contains toys, activity cards and books or music CDs which can be borrowed from the library and reflect activities suitable to different age groups.

Chair of Border Trust, Chris Horton, attended the launch at the Albury Botanic Gardens. The project was chosen on the basis that it encouraged parental involvement with children's play whilst choosing a method that reduced impact on the environment. "We liked the fact that the Toy Library encourages people to reduce the number of toys they purchase and re-use those available within their service, thereby contributing to a greener environment", Chris said.

Library representative Catherine Little explained, "This way families can borrow new toys every fortnight, saving money and space at home".

Families are encouraged to become a member at a reasonable cost, and the toys are suitable for children up to school age.



Photo courtesy Border Mail

Take a Look at the Border Trust Website

The website at www.bordertrust.org.au has been upgraded. It is more user friendly and up to date with working links to the various grant applications that the Trust administers. Many hours have been devoted to the task with the end result just terrific! Take a look and see what you think. We welcome your input and will change and update regularly. Our thanks to volunteer Alana Nesire for so capably steering this project.

Dates for your Diary

Planning Workshop

When Wednesday 25th June 3.00—6.30pm

Where Hothouse Theatre Studio
Gateway Village, Lincoln Causeway

Community Network Leaders, this is your chance to have a say and to introduce friends and associates who may be interested in assisting us to map out future directions of Border Trust.

Your invitation is enclosed!

2008 Christmas Event

When Wednesday 10th December

Further details to be advised
next newsletter

Not to be missed!



Save a Tree! Have your next newsletter emailed. We seek your support to reduce our carbon footprint. Please advise Julie if you are happy for this to happen. Email: mail@bordertrust.org.au or simply phone the office on 0260513349.

Back to School Vouchers Well Received

Once again, Border Trust has had the privilege of distributing vouchers to schools across the region. The program is administered by FRRR, the Foundation for Rural and Regional Renewal, using funds donated by the Sidney Myer Fund, the Bennelong Foundation, Visy, the DOXA Youth Foundation, the Edward Wilson estate and Target Australia.

The school principals are given autonomy to allocate the vouchers to families identified in the greatest need of financial assistance. Three hundred \$50 vouchers were delivered to 22 primary and secondary schools, with approximately 239 families feeling the benefit.

When asked her opinion of the program, Lana Salter, Student Wellbeing Co-ordinator at Wodonga Senior Secondary College said "This is a wonderful initiative. It works beautifully because I can identify that a student needs assistance and provide an immediate and positive result. The students are getting something that they would not otherwise have that is not a 'hand me down' but something new, and it belongs to them. Of course, this has reduced the financial pressure on struggling families."

Mars Petcare Gives Generously

A generous commitment to the local community has been forthcoming from Mars Petcare with a donation made in late 2007. In a letter to Border Trust recently, they said, "We believe this to be a great approach to support many worthwhile projects and people across our region. Knowing the Border Trust is made up of a skilled group of people with community experience, assures that donations will be distributed fairly, across the local community. Mars Petcare would like to continue this support in the future and hope other businesses get on board, to assist developing a great way to provide a positive future for our local community." A further generous donation was received in March. This came about as the result of an office refurbishment.

Border Trust Community Grants Announced

Expressions of interest have been invited from community groups who seek funding for projects with a clear and lasting benefit. All expressions of interest are submitted via the Border Trust website or alternately by contacting Julie at the office for a hard copy version.

Grant making is done via a two stage process, with an expression of interest the first step and a full application to follow at the invitation of the Board.

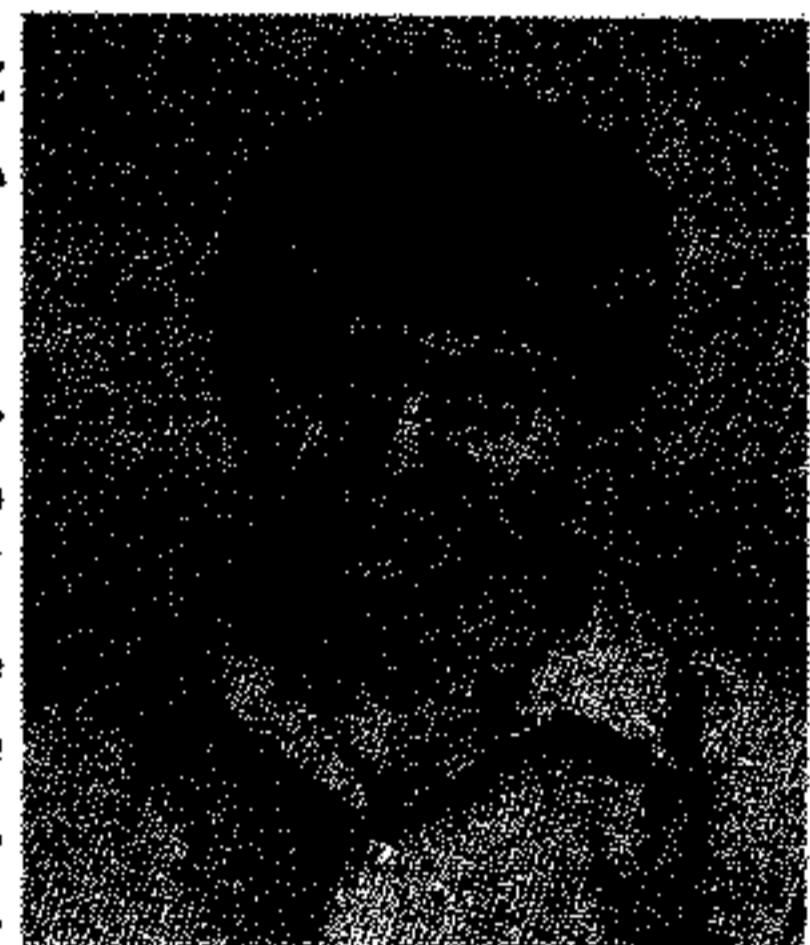
The timeline for this grant round is as follows:

17th & 24th May	Ads in Border Mail
Noon 27th May	EOI's close
4th June	Shortlist to Board
5th June	Invitations to 2nd stage applicants
10th June	Full applications close
18th June	Subcommittee meets applications assessed
25th June	Final shortlist to Board Successfulls announced at our Planning Workshop

The Bobby Garratt Memorial ADFA Scholarship

July will see the second-Bobby Garratt scholarship made available to a local student gaining entry to the Australian Defence Force Academy. The fund was established in Bobby's memory by his mother Julie, and her partner Allan. It provides a lasting benefit to youth in the region and is a fitting testimony to Bobby's dreams and aspirations.

Border Trust is proud to be ensuring that the scholarship carries on "in perpetuity". We look forward to working closely with Julie and Allan, and the Defence Force Recruitment staff in Albury to honour the successful candidate.



GIVE WHERE YOU LIVE



is the sentiment that Border Trust wishes to instill into every home and business across the region. As the end of the financial year approaches, you are encouraged to consider making a donation to Border Trust. This will help us to remain a conduit to community well being by expanding our ability to fund worthwhile projects across the region.

Donations are not the only way that you can give to your community.

- 'Foundation Builders' are the cornerstone to our ongoing success
- 'In kind' assistance by way of expertise or resources is needed
- Sponsorships can be applied in many ways to add benefit to our activities
- Ever considered a co-investment arrangement? You retain full control and access to the principal amount, with the interest accrued going to community grants.
- Bequests are also a positive way that you can assist.

We would be most happy to discuss with you the many opportunities that exist. Feel free to contact our office on 02-60513349.

Thank You

Our thanks go to Kate Sleeman, Director/ Developer of the Alpine View Estate in Wodonga who recently made a sizeable donation to Border Trust. This donation will be put to good use in our second Community Grant round this year.

Kate loves the concept of giving locally and knows that her kind donation every year contributes to the great work that Border Trust does. If you are in a position to make a donation, we would love to hear from you.

GIFT GIVING DETAILS

Donations can be paid directly into the Border Trust Bank Account at Hume Building Society
BSB: 640 000 Account: 558709 S16

Donations by cheque made payable to Border Trust—the Community Foundation for the Albury Wodonga region, and mailed to **PO Box 3288, Albury NSW 2640**

For more, go to www.bordertrust.org.au or email mail@bordertrust.org.au

GIFT GIVING FORM

Name/organization

Address

Town/Suburb Postcode

I/we wish to support the Border Trust giving program by making a tax deductible donation of

\$ on / / 2008

Office use only / / 2008 receivedReceipt number/s

MARS
petcare
australia

